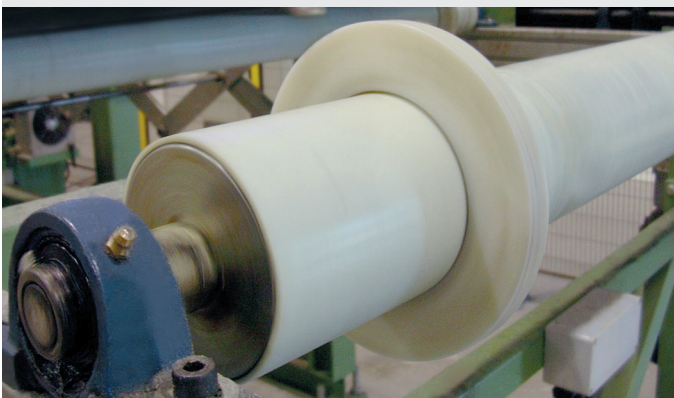




BELTING
Technology

Roller Coating Sleeves



The Next Step in Belting

Roller Coating Sleeves

➤ Volta sleeves are made from tubular extrusions with standard thicknesses of 2-3mm (the table below shows the sizes which are defined by inner and outer diameters ID and OD) and are cut to length for coating rollers in situations where a product requires cushioning while moving across a roller bed or conveyor. Applications include potato intakes and ceramic tile lines.

The sleeves are extruded from a smooth durable 85A Shore white TPU to avoid marking products. Some sizes are available with a ribbed outer surface. Once cut to length they can be mounted onto the roller by means of the Volta Sleeve Mounting Tool which uses compressed air to inflate the tube dimension enough to permit the insertion of the roller. Once the air supply is cut off the tube assumes its original diameter and fits tightly over the roller – no adhesive is required.

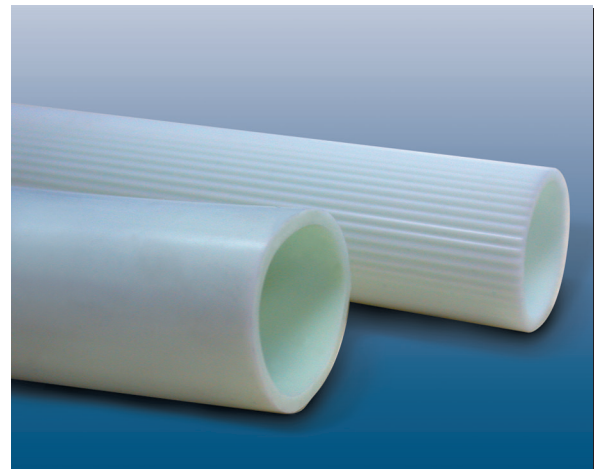
Nomenclature:

The sleeve designation contains two numbers. The first number is the diameter of the metal roller to be covered. The second number is the desired outside diameter (O.D.) after the sleeve is mounted on the roller. For example, a 50x55 sleeve is designed to cover a roller with an outside diameter of 50mm and the outside diameter of the covered roller will be 55mm. This identification system is used for both standard and ribbed sleeves.

Packaging:

Sleeves up to 50x55 mm are in 30m /100' rolls.

Sleeves from 60x65 mm are supplied as 3m /10' tubes.



Ribbed and Standard (smooth surface)



Non-marking surface protects products

Sleeve Dimensions (mm)						
10X14	30X35	40X45	50X55	60X65	80X85	90X95
22X27	32X37	40X50		63.5X68.5	85X90	
25X30	35X40	42X47		65X73	88.9X94	
27X32	38X43	45X50		73X78		
		48X53		77X82		

Note: Contact your local distributor for further details regarding the dimensions and availability of Ribbed Sleeves.



Corporate Headquarters

Sales and Manufacturing
sales@voltabelting.com

• **USA**
• Tel: +1 973 276 7905
• Fax: +1 973 276 7908
• Toll Free: 1-877-VOLTAUS

• **EUROPE**
• Tel: +31-546-580166
• Fax: +31-546-579508

www.voltabelting.com

Volta Belting makes no warranty with respect to any of its products for a particular purpose. See **Volta** General Terms and Conditions.

Copyright©2013 Volta Belting Technology Ltd.
CAT318EN00 Version E – June 2013.